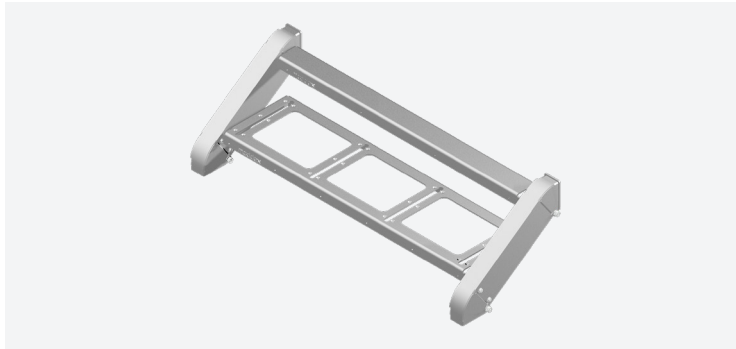


# EB140 stair

**Ezibilt®**  
Stair, Ramp and Walkway System

Adjustable ramp, stair and walkway system  
*Compatible with Moddex Handrail and Balustrades*

Patent Pending NZ778084



## Key features

- › Flexibility with adjustable height and ramp usable at level or 4° angle, stairs at 26-38°.
- › No-weld assembly
- › Flat pack delivery
- › Reduced corrosion
- › Negate the need for complex, on site measuring

## Applications suited to

- › Primary Schools
- › Secondary Colleges
- › Early Education
- › Road and Rail Infrastructure Projects
- › Water and Sewerage Treatment Plants
- › Mining
- › Maintenance Platforms and Access Ramps
- › Portable Buildings

## Specification Summary

Supply of Ezibilt proprietary system, installed according to Moddex Specifications, or by a Moddex accredited installer. Supplied as flat packed parts for walkway structure, for platforms to be built on site prior to installation.

## Technical Data

### Material - Ramp, Platform & Stair

3mm C350 RHS
3mm G250 Steel Plate & Pipe
All steel works & fixings to be HDG

### Protective coating

<b>Steel Components</b>	G300/390 Hot Dip Galvanised
<b>Optional</b>	Powder coating and paint specs*

\*The standard process for Powder Coated and Painted handrail products is as follows: black steel is used for fabrication. The steel is sand blasted and a zinc primer coating is applied. The powder coat / paint coat is then applied over the zinc primer creating a dual shield coating with a decorative finish.

## Base Fixing

- › For timber substrates, 4/M16 x 120 coach screws
- › For Concrete substrates, M16 bolts threaded rods, drilled 90mm into concrete and epoxied with EPCON C6 Series Chemset or M12 x 100 screw bolts

## EB-140

<b>Dimensions</b>	- 1375mm wide (internal 1225 mm) - Adjustable Height (Maximum height 4m from FFL)
<b>Tread Dimensions</b>	1200mm x 300mm (approx)
<b>Angle</b>	Stairs: 26-38°, depending on application

## EB-140W

<b>Dimensions</b>	- 1575mm wide (internal 1425 mm) - Adjustable Height (Maximum height 4m from FFL)
<b>Tread Dimensions</b>	1600mm x 300mm (approx)
<b>Angle</b>	Stairs: 26-38°, depending on application

## ALL MODULES

<b>FRP Minimesh</b>	Available on request. See FRP38MM Spec Sheet
<b>Fixings*</b> <small>*Other Fixing options are available on request</small>	Self Drilling Screws - Galv M12 Coach Bolts - Galv Decking Screws - Galv M12 Mechanical/ Chemical concrete fixing - Galv
<b>Steel Components</b>	Material: - 3mm C350 Steel Plate - 3mm G250 Steel Plate Finish: - Galv
<b>Weight</b>	43kg per SQM (structure only)

\*Refer to handrail specification sheets for handrail specifications.

## Compliance

- Moddex Ezibilt™ system is designed and manufactured in accordance with the following loading standards:
- › AS/NZS1170.0
  - › AS/NZS1170.1
  - › AS/NZS1170.2
  - › AS/NZS1170.3
  - › AS/NZS1170.5
  - › AS1428 Access Routes
  - › Live Load allowance of 2.5kPa (5.0 kPa or 1.8 kN achievable with correct foundation)
  - › Maximum height of 1.0m (non-braced) greater heights achieved with bracing please enquire
  - › Maximum wind zone of "Very High"
  - › Compatible with all Moddex handrail and balustrade systems
  - › Supplied with Reg. 126 Certificate.

## Warranty

10 years from date of purchase subject to correct installation, use and maintenance in accordance with manufacturer's specifications and recommendations, unless otherwise negotiated at the time of purchase.

## Inspection & Maintenance

Visual inspection for any damage or loose fixings must be done periodically and prior to use. No certified maintenance required. Basic wear and tear preventative maintenance is recommended, as per manufacturer's specifications and recommendations.

— Refer installation manual

## Design Life

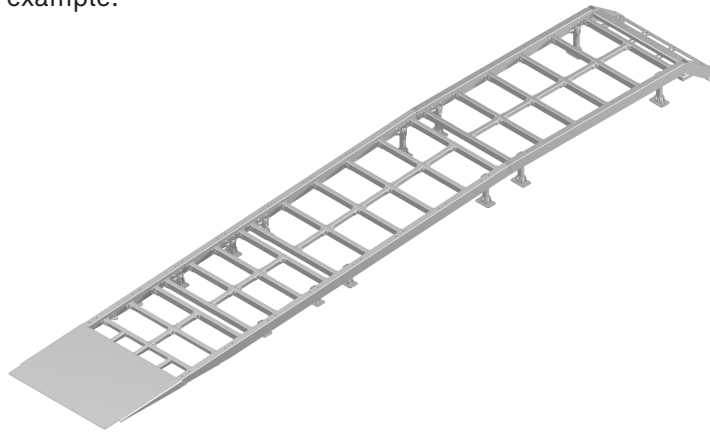
Standard design life of walkway structure is 50 years.

## Technical Information

Ezibilt is delivered as a series of parts to make up a combination of modules depending on your site requirements:

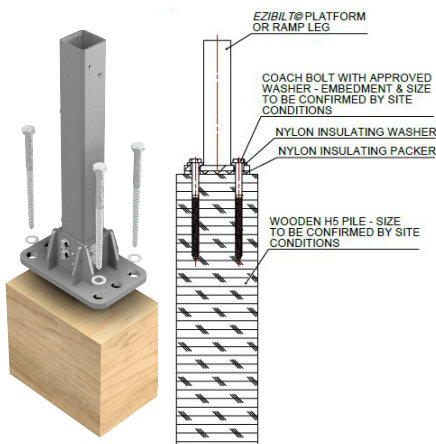
- **Ramp stairs to be specified in widths as per Moddex Standard: 1375mm or 1575mm**
- **Height parameters are specified as below:**
  - Under 600mm - No bracing required
  - From 600mm - 1800mm, bracing is required
  - Over 2000mm, please contact Moddex directly on 1800 663 339 to discuss

Ramp and stair structure example:

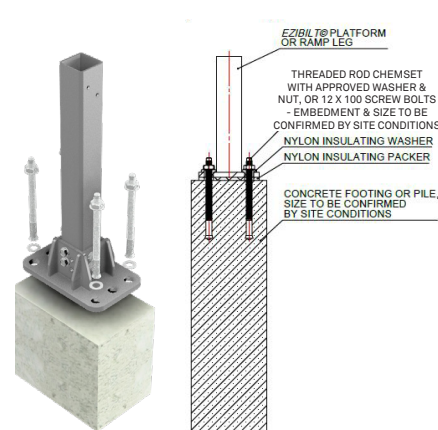


Fixings:

### Fixing to Timber



### Fixing to Concrete



### Fixing Inground



Footing depth and diameter to be specified by builders site engineer.

Moddex cannot provide a standard footing detail due to multiple soil types.

**\*Supplied as flat packed parts to be built on site prior to installation.**

**Important Note:** Failure to supply and/or install proprietary product in accordance with above Standards and codes, specification and instructions, voids complete system certification and/or warranty.

Designed and manufactured by Moddex. ©Moddex Group. All Rights Reserved.

For information or technical support please contact us

T 1800 663 339 (AU)

T 0800 663 339 (NZ)

[moddex.com](https://www.moddex.com)